

Landscape Digital Advertising Display 52 inch



Landscape Digital Advertising Display

52 inch



This new range of LCD display is purpose built to operate as an Advertising Display, requiring no computer, and easy to use as inserting a USB stick into the display.

The displays are suitable for applications in retail; public service such as hospitals, financial institutions and places of entertainment such as a gym or cinema. They are supplied with a wall mount for mounting in landscape mode.

Each display includes an integrated media player that will accept CF or SD memory cards or USB memory sticks. Copy and paste Images, Audio and Mp3 to USB drive, Insert drive into display, the content will start to upload to the display



APPLICATIONS

Business Institution: Department store, Train store, Supermarket, Exclusive store, Grand Hotel, Restaurant, Travel Agency, Drug Store, etc.

Financial institution: Bank, Stock Market, Currency Exchange centre, Insurance Company, Mortgage stores etc.

Public Service: Hospital, School, Telecom Hall, Post Office etc.

Public place : Subway, Airport, Bookstore, Park, Exhibition Centre, Stadium, Museum, Conference Centre, Tickets Agency, HR Market, Lottery Centre etc.

Real estate: Apartment Villa, Business building, Show Room, Real estate trade centre, etc.

Place of Entertainment: Cinema, Gym, Holiday Inn, Club, Message room, Bar, Internet Café, Beauty Parlour.

FEATURES

- Modern appearance
- High quality gloss finish
- Power time settings
- Remote control
- Lock protect
- User friendly
- Designed for 24/7 usage
- Metal back casing

PLUG AND PLAY

All our displays are plug and play and can play content simply via a usb drive loaded with images, sound and video. So this software is used for scheduling purposes.

FREE SOFTWARE

A user friendly and simple to use playlist creator and editor software is supplied free of charge with this product. It allows the user to create professional looking media content within minutes.

Included are professional transition options with the software. Although all our screens are plug and play and will automatically play in a loop when inserted with a usb drive loaded with media content such as images.

VIDEO FORMATS

File format such as power point or flash can be converted to a format which is compatible with these displays.

INSTALLATION

Professional installation can be provided which includes a walkthrough of the product and its features.

OPTIONS

DVI, VGA input option available.

Specification

BOTTOM



Product Name	LCD Landscape Advertising Display
Display Size	52 Inch
Resolution	1920x1080
Display Area (mm)	1209.6x680.4
Unit Size (WxHxD mm)	1268x761x104
Net Weight	45kg
Gross Weight	51Kg
Vesa Holes	600x400/600x280/600x120
Brightness	500 cd/m ²
Ratio	16:9
Contrast Ratio	2000:1
Input Voltage	AC110-240V(50Hz-60Hz)
Working Temp	0 °C to 50 °C
Media Formats	MPEG1 (VCD),MPEG2(DVD), AVI,Divx,Xvid,JPEG,MP3
Memory	2GB SD CARD (Supplied)
Audio	5W,8Ω
Card Type	CF/SD/USB
Power Consumption	222W
Box Size (mm)	1460 x 965 x 310
Accessories	CD, Keys, WallMount , Power Lead

Playlist Creator / Editor

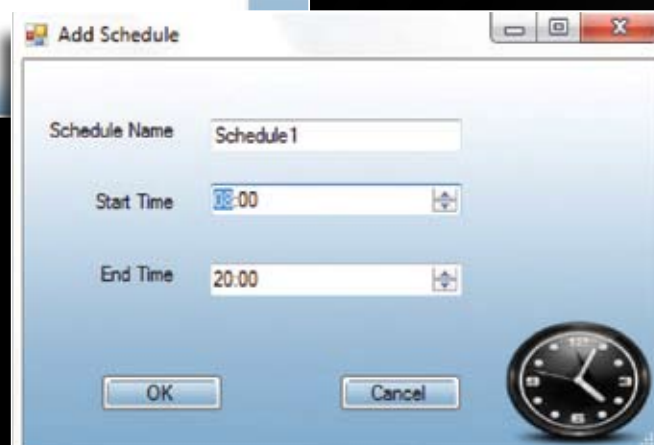
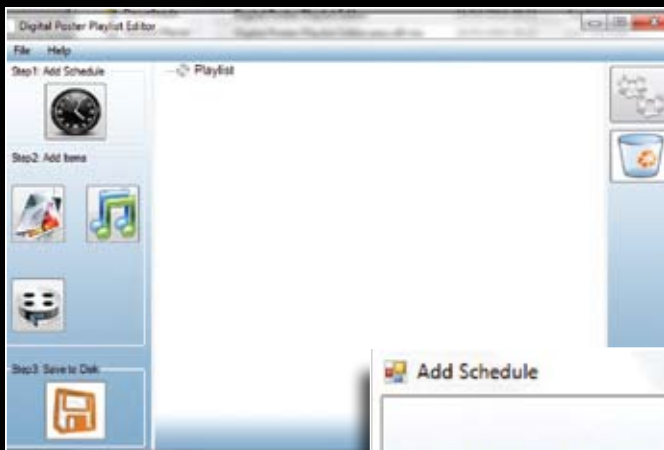
Creating playlists with the software Playlist editor supplied provides you with more advanced features namely options such as adding scheduling and more advanced features for Images, Video and audio.

The software also allows you to edit any part of a pre-existing playlist.

CREATE NEW PLAYLIST

Allows you to create a new playlist and Add:

- Scheduling
- Images
- Audio
- Video
- Scrolling messages



Allows you to load previously created playlists and edit any section within that playlist.

The playlist editor is laid out in an easy to use manner, on the left hand side of the application the primary functions are set out in easy to follow steps



REQUEST A DEMO

You can request a demo by contacting us at:

Designbp

Building 13, Embassy Business Park, The Hayes, Lye, Stourbridge, West Midlands DY9 8RY

T: 0845 270 4950

E: ideas@designbp.ltd.uk

www.designbp.ltd.uk

CONTACTS

Mark Greenway

Jeremy Pitt

designbp
marketing and new media